

Features

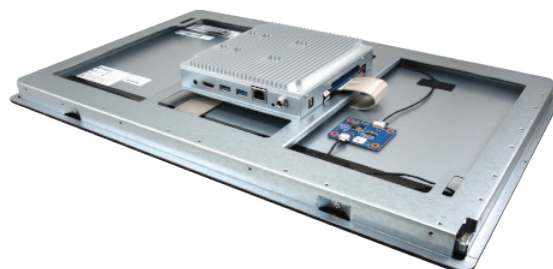
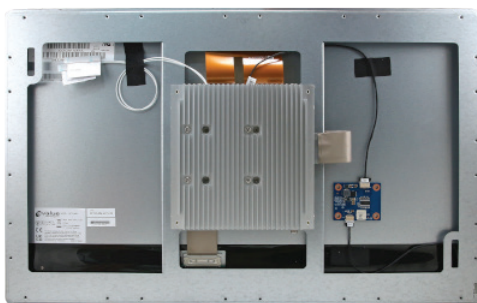
- 21.5 inch PCAP Touch Screen
- Intel® Celeron J3455 Processor Onboard
- 4GB RAM Onboard
- 32GB eMMC Onboard
- Projective Capacitive Touch
- 10/100/1000 Ethernet
- M.2 B-Key 3042, M.2 E-Key 2230 Socket
- Supports 802.11 a/b/g/n/ac Wireless LAN
- Micro SIM Card Socket for LTE Module
- Supports Windows 10
- DC 12~24V Input



Specifications

System	
CPU	Intel® Celeron J3455 Quad Core Processor onboard supports 1.50GHz
System Memory	4GB DDR3 SODIMM 1866 RAM
Storage	32GB eMMC onboard
Expansion Interface	1 x M.2 B-Key 3042 1 x M.2 E-Key 2230
Wireless Communication	WLAN supports 802.11 a/b/g/n/ac
OS Support	2019 Windows 10 (64-bit)
Panel	
LCD Size	21.5" TFT LCD
Display Type	Full HD
Resolution	1920 x 1080
Luminance	250cd/m ²
View Angle	178 (U), 178 (D), 178 (L), 178 (R)
Response time	30ms
Backlight	LED
Touch Type	Projective Capacitive
Touch Light Transmission	85%
Display	
Multi-Display	LVDS + HDMI

External I/O	
Display	1 x HDMI
USB	2 x USB 3.0 Type A
LAN	1 x RJ45
Audio	1 x Headphone Jack
Power	1 x DC-in Power Jack
Other	1 x Reset Button
Internal I/O	
Display	1 x LVDS
USB	1 x Micro USB 1 x USB Interface 1 x USB Touch Interface
COM Port	1 x RS232 (Tx/Rx/RTs/CTs) 1 x RS232 (Tx/Rx/RTs/CTs) RS485 (Tx/Rx/RTs/CTs)
GPIO	1 x GPIO (GPIO 16-bit)
Other	1 x DMIC Camera Module Interface 1 x Touch Button Control (Power/Vol/Brightness) 1 x Power Interface (12~24V) 1 x AMIC Microphone Interface 1 x Speaker Interface 1 x JSEN Sensor Interface (I2C x2) 1 x Debug Port (Tx/Rx) 1 x RTC Battery interface 1 x Micro SIM Card Socket for LTE Module 1 x Micro SD Slot



Power Requirement

Requirement	12 to 24V DC Input
Power Mode	DC Jack, DC input 4-pin header

Mechanical and Environment

Operating Temp	0°C ~ 40°C (32°F ~ 104°F)
Storage Temp	-20°C ~ 60°C (-4°F ~ 140°F)
Operating Humidity	40°C @ 95% Relative Humidity, Non-condensing
Certification	CE, FCC Class A
Weight	4.3kg/ 9.48lbs
Dimension	20.28" x 12.68" x 2.11" (515 x 322 x 53.7mm)

Ordering Info

OFT-21W04-3410-A1R	21.5" OFT, Intel® Celeron J3455 Quad Core, 4GB RAM, 32GB eMMC. PCAP, DC12~24V, Ubuntu 20.04
OFT-21W04-3411-A1R	21.5" OFT Intel® Celeron J3455 Quad Core, 4GB RAM, 32GB eMMC, PCAP, DC12~24V, 2019 Windows 10 IoT LTSC

Power adapter and power cord are optional items and not included. Wi-Fi module is not included.

* All product specifications and images are subject to change without notice. Last update: 2022/06/15



BCM Advanced Research

11 Chrysler, Irvine, CA 92618 USA
An Industry Leader in Industrial Motherboards
& Embedded Computing

www.bcmcom.com

BCMSales@bcmcom.com
(949) 470-1888